

MORRISON BUNGALOW

AREA:

MAIN FLOOR:	1,086 SF
UPPER FLOOR:	1,209 SF
TOTAL LIVING:	2,295 SF
GARAGE:	276 SF

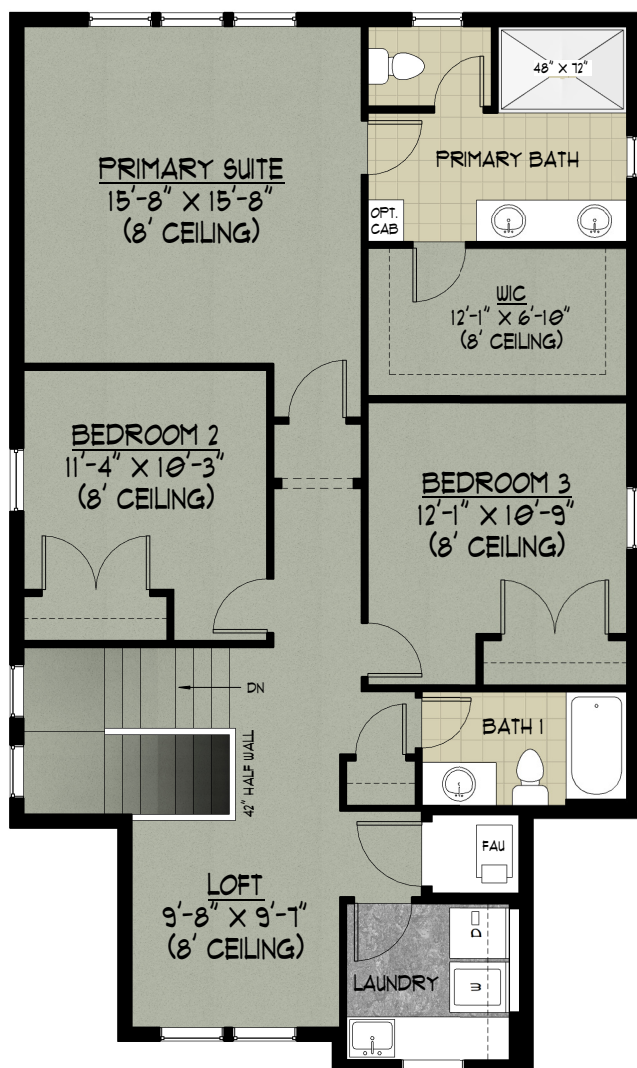
COPYRIGHT © RENAISSANCE HOMES, PHONE: (503) 636-5600

We are committed to constantly updating and improving our homes. As a result, floor plans, elevations, and prices are subject to change without notice. Artists' renderings may not exactly represent final product. Copyright © Renaissance Homes 2018

KEY

	CARPET
	CONCRETE
	HARDWOOD <small>*DOES NOT INDICATE PLANK DIRECTION*</small>
	TILE
	VINYL

MAIN FLOOR PLAN



UPPER FLOOR PLAN