

52'-0"



## BRISTOL SEABOARD - GR

### AREA:

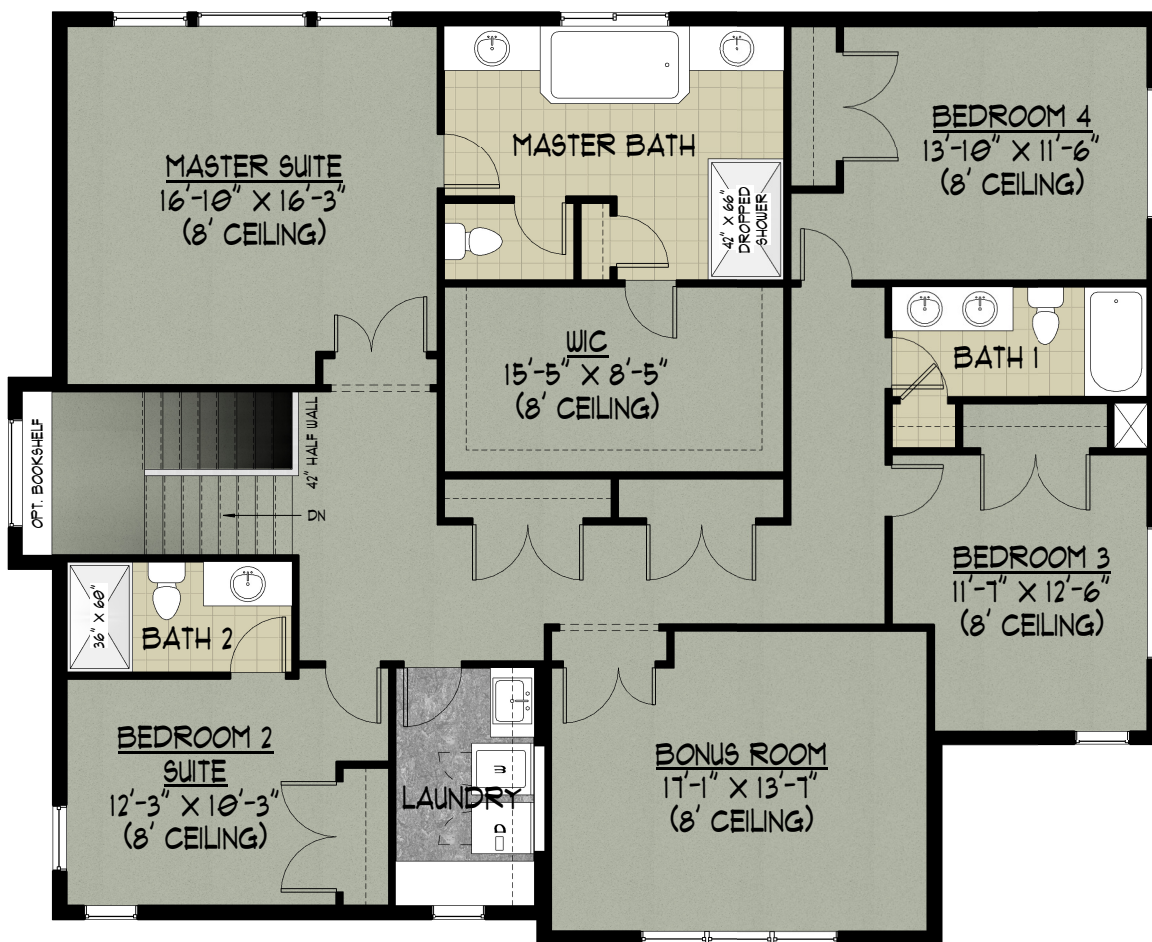
MAIN FLOOR:	1,441 SF
UPPER FLOOR:	1,904 SF
TOTAL LIVING:	3,345 SF
GARAGE:	104 SF

COPYRIGHT © RENAISSANCE HOMES, PHONE: (503) 636-5600  
We are committed to constantly updating and improving our homes. As a result, floor plans, elevations, and prices are subject to change without notice. Artists' renderings may not exactly represent final product.  
Copyright © Renaissance Homes 2018

### KEY

	CARPET
	CONCRETE
	HARDWOOD <small>*DOES NOT INDICATE PLANK DIRECTION*</small>
	TILE
	VINYL

### MAIN FLOOR PLAN



### UPPER FLOOR PLAN