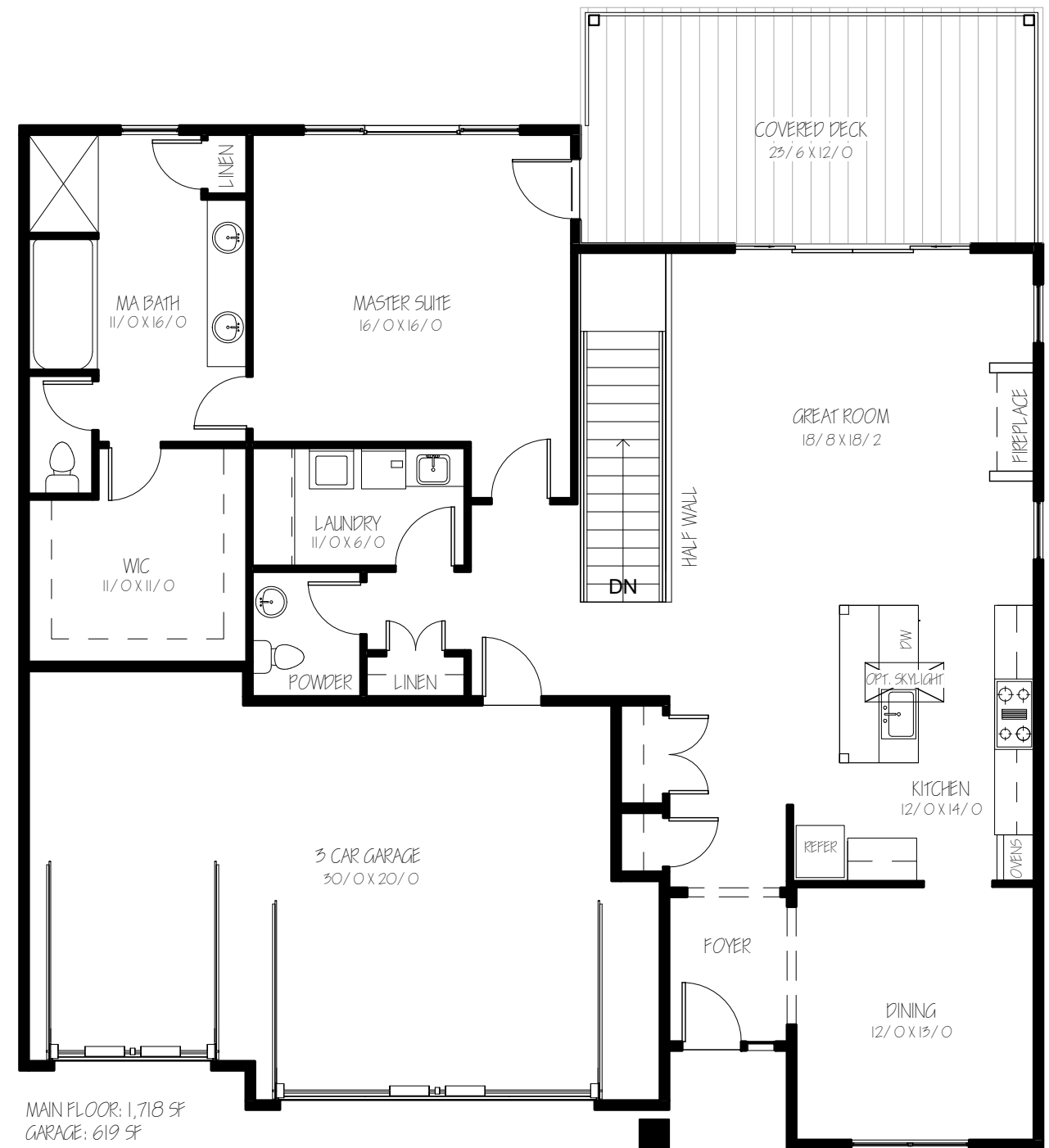


BASEMENT: 1,080 SF

1 BASEMENT- MARKETING  
1/8" = 1'-0"



MAIN FLOOR: 1,718 SF  
GARAGE: 619 SF

2 MAIN FLOOR- MARKETING  
1/8" = 1'-0"



16771 Boones Ferry Rd  
Lake Oswego, OR 97035  
Phone: (503) 636-5600 Fax: (503) 635-8400

THESE PLANS ARE FOR THE EXCLUSIVE USE OF RENAISSANCE HOMES. THESE PLANS MAY NOT, IN WHOLE OR IN PART, BE USED BY ANY OTHER PARTY UNLESS ON LOAN BY RENAISSANCE HOMES TO A PARTY NECESSARY TO ASSIST IN THE USING OF THESE PLANS. REPRODUCTION OF THESE PLANS, IN WHOLE OR IN PART, IS STRICTLY PROHIBITED WITHOUT WRITTEN PERMISSION FROM RENAISSANCE HOMES. RENAISSANCE HOMES RETAINS COPYRIGHTS AND OWNERSHIP OF THESE PLANS. UNAUTHORIZED USE OR COPYING OF THESE PLANS, OR THE DESIGN THEY DEPICT INFRINGES RIGHT UNDER THE COPYRIGHT ACT. INFRINGEMENTS FACE LIABILITIES THAT INCLUDE PENALTIES OF UP TO 100,000 PER WORK INFRINGED WILLFULLY.

RENAISSANCE PLANS PREPARES ITS PLANS CAREFULLY FOR THE USE OF SUBCONTRACTORS, HOWEVER RENAISSANCE HOMES WILL NOT BE RESPONSIBLE FOR ANY DAMAGES RELATING TO THE ACCURACY AND OVERALL INTEGRITY OF THE PLANS. SUBCONTRACTORS, THEREFOR, MUST CAREFULLY INSPECT ALL DIMENSIONS AND DETAILS PRIOR TO THE START OF CONSTRUCTION. IF ANY ERRORS OR OMISSIONS ARE NOTICED, THE CONTRACTOR MUST NOTIFY RENAISSANCE HOMES BEFORE THE START OF CONSTRUCTION. IN ADDITION SPECIFIC SITE CONDITIONS, LOCAL CODE INTERPRETATION, AND COMMON BUILDING PRACTICES SHOULD BE FOLLOWED.

COPYRIGHT © RENAISSANCE HOMES,  
PHONE: (503) 636-5600