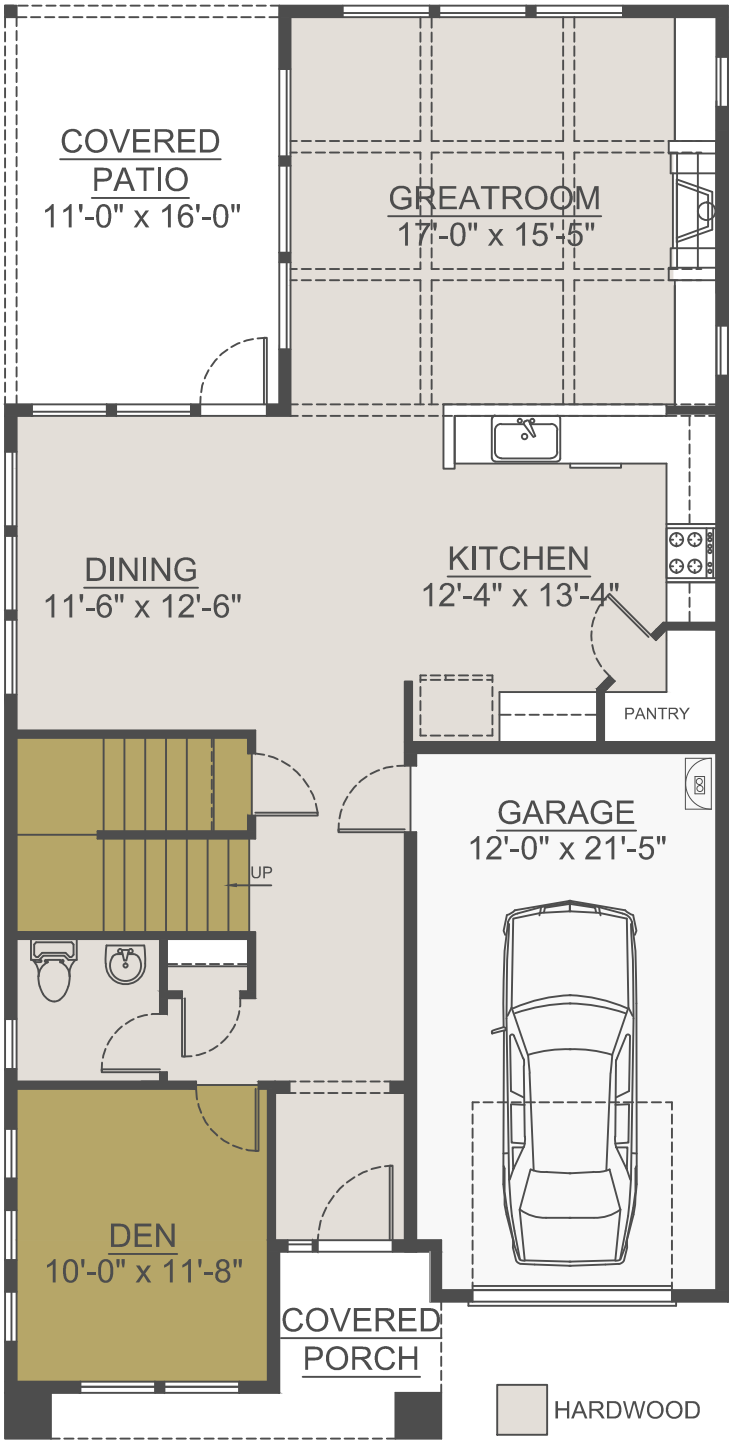


MORRISON BUNGALOW



MORRISON BUNGALOW  
MAIN FLOOR PLAN  
1,086 SQ.FT.

- HARDWOOD
- CARPET
- TILE
- CONCRETE
- MARMORETTE



MORRISON BUNGALOW  
UPPER FLOOR PLAN  
1,211 SQ.FT.

We are committed to constantly updating and improving our homes. As a result, floor plans, elevations, and prices are subject to change without notice. Artists rendering may not exactly represent final product. 09/28/15 © Renaissance Homes 2011